



Stonepeak Ceramics Trim System

A variety of bullnose, cove base and mosaic tiles are available for complete design aesthetics.

Refer to **StonePeak Ceramics Product Catalog**

1. PRODUCT NAME

**Stonecrete Collection
Data Sheet**

2. MANUFACTURER

StonePeak Ceramics, Inc.
 314 West Superior, Suite 201
 Chicago, IL 60654
 Telephone: 312.506.2800
 Fax: 312.335.0533
 Email: info@stonepeakceramics.com
 Website: www.stonepeakceramics.com

3. PRODUCT DESCRIPTION

Stonecrete – The look and feel of aged concrete, the Stonecrete collection is offered in sizes 12"x24", 24"x24", 24"x48" with trims and decorative mosaics.

Recommended Applications:

Ideally suited for commercial and residential floors and walls.

Finishes/Textures:

- Thru Color
- Honed rectified
- Lappato rectified

Size/thickness:

- 24" x 48" 1/3" nominal *(8 mm)
- 24" x 24" 1/3" nominal *(8 mm)
- 12" x 24" 1/3" nominal *(8 mm)

**denotes work size per ISO 10545-2*

Recommended Grout Joint: 3/32" or greater

Grout joints of 1/8" inch or less, especially with larger format tiles or running bond patterns, may require floor flatness values in excess of the 1/4" in 10' (or 1/16" in 1.0') standard required by ANSI.

For patterns with running bond/brick joints patterns StonePeak recommends a maximum of 33% offset.

4. TECHNICAL DATA

Physical Properties	ASTM Test	Industry Standards	StonePeak Results
Water Absorption	C373	Impervious < 0.5%	≤ 0.1%
Thickness Dimension	C499	Range ±0.04 Inc. Max	≤ ±0.04 Inc.
Facial Dimension	C499	± 0.25%	≤ ±0.25%
Warpage Average Diagonal	C485	±0.40%	≤ ± 0.40%
Warpage Average Edge	C485	±0.40%	≤ ±0.40%
Wedging Average	C502	± 0.25%	≤ ±0.25%
Bond Strength	C482	≥ 50 psi	≥ 200 psi
Breaking Strength	C648	≥250 lbf	≥ 400 lbf
Hardness (Mohs)	Scratch Test (No regulated)	Range 0 -10	≥7
Visible Abrasions Resistance for Glaze Tiles	C1027	No Requirement Range 0 – 5	Class 4
Frost Resistance	C1026	No samples must show alterations to surface	No Evidence Of Damage
Chemical Resistance	C650	No Requirement Range E- A	Class A
Stain Resistance	C1378	No Requirement Range E- A	Class A
DCOF Honed Finish DCOF Lappato Finish (semi-polished)	BOT 3000 BOT 3000	≥ 0.42 ≥ 0.42	≥ 0.55 ≥ 0.42
Aesthetic Class/Shade Rating	Visual Evaluation Shade &Texture	No Requirement Range V0 – V4	V3

DCOF: StonePeak does not recommend polished surfaces in areas subject to exposure from grease, oil or water.

5. INSTALLATION

Surface preparations:

All installation work using StonePeak Ceramics' tiles will conform to the standards set forth in the latest version of ANSI A108/118 and/or the TCA Handbook for Ceramic Tile installations.

All substrates should be between 40 degrees F and 90 degrees F and structurally sound, clean and free of all dirt, oil, grease, paint, concrete sealers or curing compounds as per ANSI A108.01.

Deflection:

Substrate must conform to all state and local building code requirements and ANSI A108.01 for maximum allowable substrate deflection

Movement joints:

Movement joints shall be provided throughout the tile and work will conform to ANSI Specification A108.01-3.7; A108.02 – 4.4.and TCA Details EJ171.

Installation or setting materials:

Setting materials used will conform to the ANSI 118.4 standard or greater and be recommended by the selected manufacturer for the installation & setting materials for ceramic or porcelain tile based on the application requirements.

6. AVAILABILITY AND COST

StonePeak Stonecrete Collection is available from selected distributors of ceramic tile.

To find accessible information of delivery and product costs for your area, please contact your nearest StonePeak Ceramics distributor.

See our website the find a distributor near you:
http://www.stonepeakceramics.com/services-where_to_buy.php

7. WARRANTY

Stonepeak Ceramics guarantees that its products will be free of manufacturing defects and they will meet or exceed the performance specifications set forth in ANSI 137.1.

For further information and details please contact your nearest StonePeak Ceramics Distributor for a written copy of the warranty information.

For distributor information go to our website:
http://www.stonepeakceramics.com/services-where_to_buy.php

8. MAINTENANCE

Care and Maintenance Recommendations Guide

Please refer to **StonePeak Ceramics Care and Maintenance Recommendations Guide** for all technical information as to the care of this collection.

9. TECHNICAL SERVICES

Technical Assistance

Guide Specifications, literature, MSDS, tile samples, details and installation procedures are all available for your use or libraries.

Please contact your nearest StonePeak representative for catalogues, physical samples or architectural binders.

Continued Education Programs are available – **1 or 2 hour HSW** Learning Units – contact StonePeak Ceramics' main office to set up a presentation.

See section 2 for contact information.

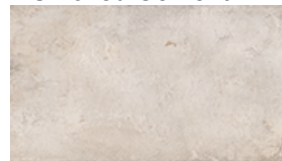
10. FILING SYSTEMS

Stonecrete Collection

Salted Cement



Smoked Cement



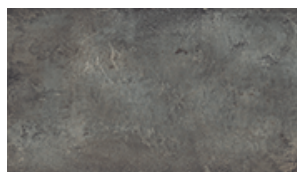
Sanded Cement



Smoldered Cement



Sabled Cement



Note to Specifier: Click on the collection name with Internet Connection to hyperlink directly to product color data at the StonePeak Ceramics website.

11. ENVIRONMENTAL CERTIFICATIONS

StonePeak proudly contain factory and product certifications:



12. RECYCLED CONTENT

Products certified by Bureau Veritas. Please ask to see certification

Pre-Consumer Recycled Content
Post-Consumer Recycled Content